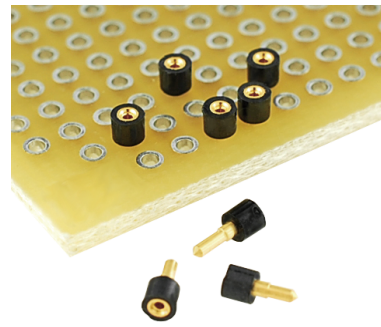


単極プラグ & ソケット One Pin Plug & Socket

- ・接触部は信頼性の高い丸ピン構造です
High reliability round contact providing good electrical and mechanical performance.
- ・2.54mmピッチ以上でのご使用が可能です
For larger than 2.54mm pitches.
- ・実装用、検査用等にご使用ください
Useful for inspection and general PCB mounting.
- ・貴社の特注仕様にて設計製作できます
Your Specific Custom Designs welcome. Consult us for details.

2.54mm Pitch Min.



Specifications

Acceptable Plug : $\phi 0.52 \sim \phi 0.30$
 Contact Resistance : less than $15m\Omega$
 Current Rating : 1.3A
 Operating Temperature : $-55^{\circ}\text{C} \sim +150^{\circ}\text{C}$

Materials

Plug

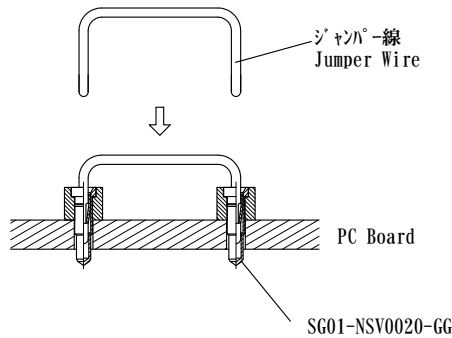
Plug : Brass Gold over Ni plating
 Insulator : High temp. thermoplastic

Socket

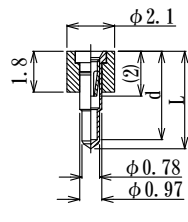
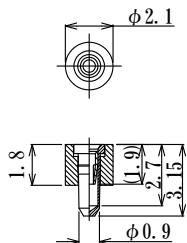
Sleeve : Brass Gold or Tin over Ni plating
 Contact : Beryllium Copper, Gold over Ni plating
 Insulator : High temp. thermoplastic

How to use

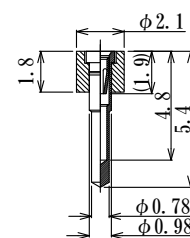
example



Socket



Parts Number	Length L	Depth d
SG01-NSV0020-GG	4.2	3.9
SG01-NSV0030-GG	5.0	4.1
SG01-NSV0040-GG	7.6	5.5



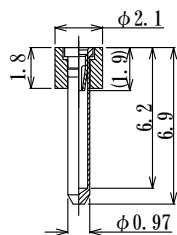
[SG01-NSF0010-SN](#) (Sleeve Tin plated)
[SG01-NSF0010-GG](#) (Sleeve Au plated)

PCB hole size : $\phi 1.0 \pm 0.05$

PCB hole size : $\phi 1.1 \pm 0.05$

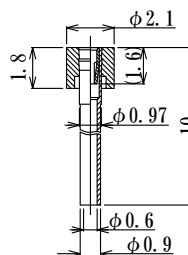
[SG01-NS55-GG](#)

PCB hole size : $\phi 1.1 \pm 0.05$



[SG01-NSF0035-GG](#)

PCB hole size : $\phi 1.1 \pm 0.05$

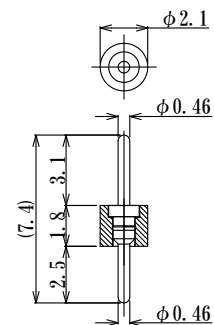


貫通 Thru Hole

[SG01-NZP100-GG](#)

PCB hole size : $\phi 1.1 \pm 0.05$

Plug



[IS01-F046-L74](#)

PCB hole size : $\phi 0.55 \pm 0.05$