

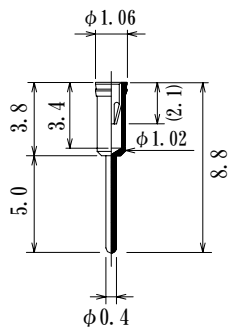
φ 0.64~φ 0.35mm plug, Socket Pins

Contact Resistance: less than 15mΩ at 0.50mm plug

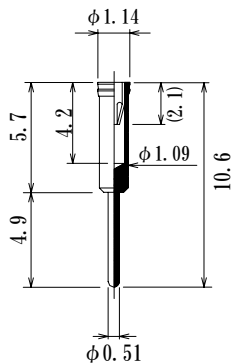
Acceptable Plug Range: φ 0.64~φ 0.35mm

Material Sleeve: Brass Gold over Ni plated

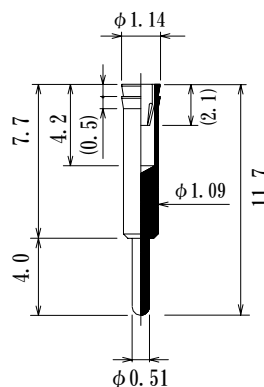
Contact: Beryllium-Copper Gold over Ni plated
 (N88contact)



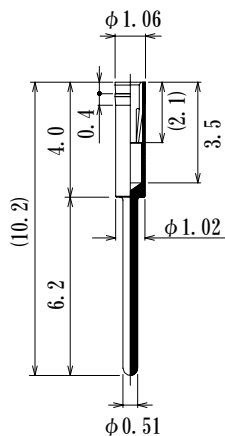
NZG8809-GG



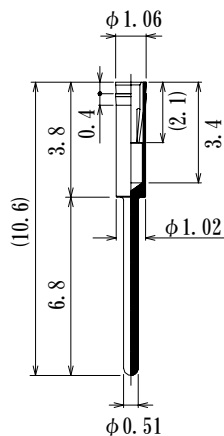
NZG88106-GG



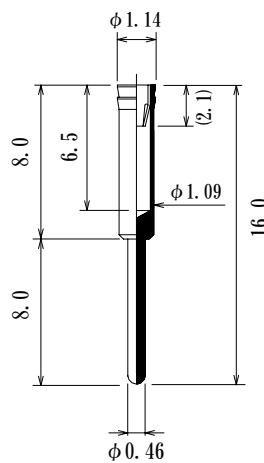
NZG88117-GG



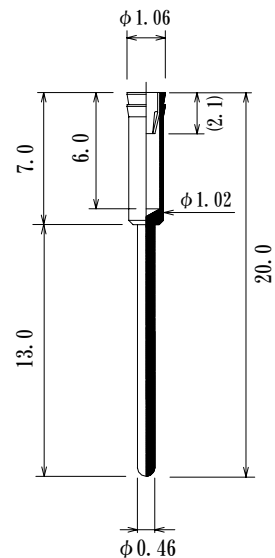
NZG8810-GG



NZG8811-GG



NZG8816-GG



NZG8820-GG