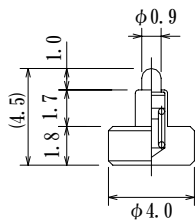
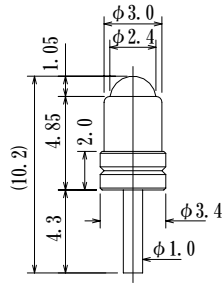


Single ended type 片端プローブピン  
 Outer Dia.  $\phi 2.0\text{mm}/0.079''$  or larger



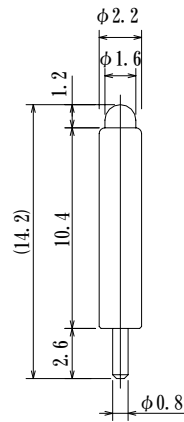
Preload 0.37N (38gf)  
 Current max 0.5A  
 1.31N (134gf) at half travel

**8YJ-E0101-01**



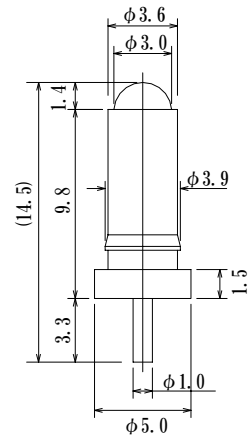
Preload 0.78N (80gf)  
 1.25N (128gf) at  
 0.8mm travel

**8YNM34485G**



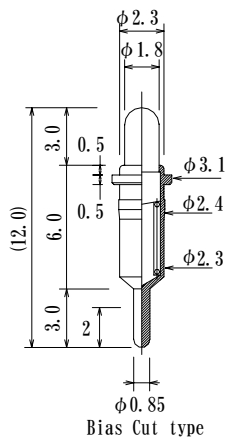
0.98N (100gf) at  
 1.0mm travel

**8YJ20104**



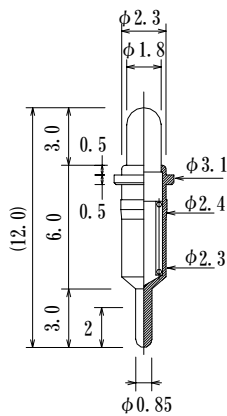
1.96N (200gf) at  
 1.0mm travel

**8YNM5098-G**



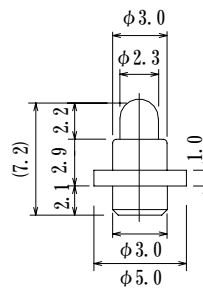
Full travel 2.5mm  
 Current max 0.5A  
 0.25N (25gf) at 1.5mm travel

**8YJ2360G-BA**



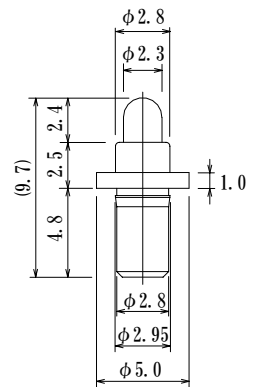
Full travel 2.5mm  
 Current max 0.5A  
 0.25N (25gf) at 1.5mm travel

**8YJ2360G-C**



Current max 0.3A  
 1.76N (180gf) at 1.0mm travel

**8YJC2350G**



Full travel 2.4mm  
 1.76N (180gf) at 1.1mm travel

**8YJ2873G-BA**

